

# Student Transportation Service Consortium of Grey-Bruce

## *Procedures*

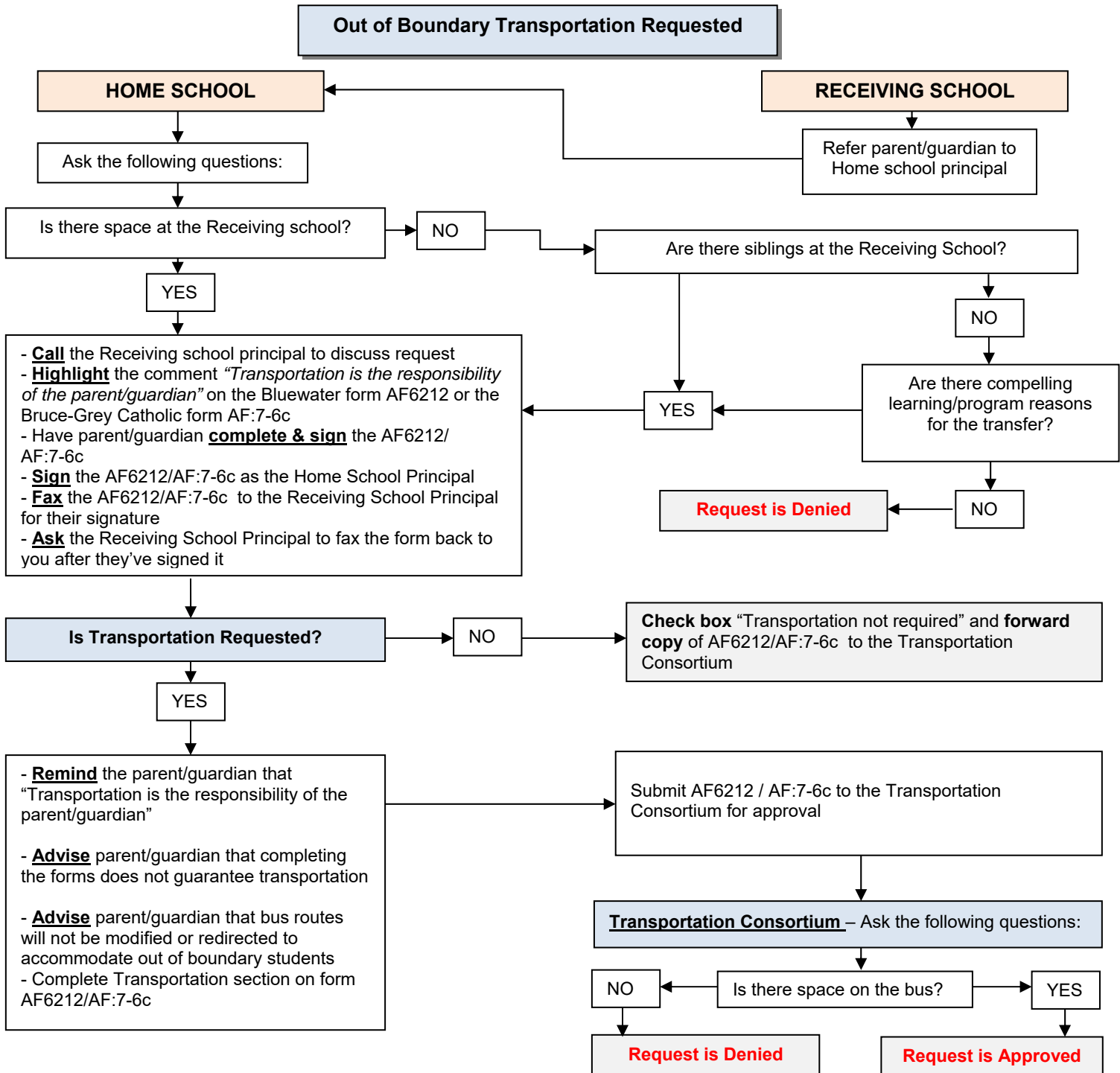
Bluewater District School Board  
Bruce-Grey Catholic District School Board

**TCP-A010**

<b>Procedure Title: OUT OF BOUNDARY TRANSPORTATION</b>		<b>Approved:</b> January 11, 2011 <b>Updates:</b> September 14, 2012 April 4, 2018
Related Forms: Form AF6212 – Bluewater District School Board Form AF: 7-6e – Bruce-Grey Catholic	Related Policies:	

<b>Intent:</b>	<b>To determine eligibility for out of boundary transportation</b>
<b>Stakeholders:</b>	School, Bus Operators, Public, Transportation Consortium
<b>Procedure:</b>  See attached “Out of Boundary Transportation Flow Chart”.  Annual renewal applications for out of boundary are not required where the student has been receiving transportation.	

# Student Transportation Service Consortium of Grey-Bruce Out of Boundary Transportation Flow Chart



## Appeals

1. Submitted in writing to General Manager
2. Staff members prepare explanations
3. Reply from General Manager within 15 days
4. Further appeal submitted in writing to Transportation Appeals Committee
5. Final decision in writing within 30 days

## Notes:

- If bus is not available at the student's address they will be required to meet the bus at the closest stop en route.
- Bus routes will not be modified or re-directed to accommodate out of boundary students.
- Once a student has been approved for out-of-boundary transportation it is no longer necessary for them to re-apply each year.
- Out of boundary transportation is not guaranteed. If a bus route changes it may cause withdrawal of transportation. In such a case the parent/guardian would be advised in advance.